

**Clark County S.D. # 161**  
**P.O. Box 237**  
**Dubois, ID 83423**

**Zone 4**

Beginning at the Northern Section line of SEC 21 TWP 10 N RGE 36E and its intersection With North Reynolds Street, then South to 2<sup>nd</sup> South Street,  
Then West to South Center St, then South to 5<sup>th</sup> South Street,  
Then East to South Reynolds Street, then South to the Clark/Jefferson County line,  
Then East approximately 10 miles to the SE corner of SEC 36 TWP 9 N RGE 37 E,  
Then North approximately 6 miles, then East approximately 6 miles,  
Then North approximately 3 miles, then West approximately 3 miles,  
Then North to the Red Road. Then North on the Red Road to the intersection Of County A-2 Road.  
Then continuing on County A-2 road West approximately 12 miles to the NE corner of SEC 23 TWP 10 N RGE 36E. Then West to the point of beginning.

**Zone 5**

Beginning at the intersection of Main Street Dubois and South Idaho Street,  
Then South to 2<sup>nd</sup> South Street, then East to Thomas Street,  
Then South to 5<sup>th</sup> South Street, then East to South Center Street,  
Then North to 2<sup>nd</sup> South Street, then East to South Reynolds Street,  
Then North to Main Street, then West to the point of beginning.

**Clark County S.D. # 161**  
**P.O. Box 237**  
**Dubois, ID 83423**

### Zone 1

Beginning at the intersection of I-15 & the Spencer Idmon Rd  
Then East approximately 12 ½ miles to the County A-2 Road Intersection,  
Then South approximately 4 miles to the junction at Red Road  
Then continuing on the County A-2 road West approximately 12 miles to the  
NE corner of SEC 23 TWP 10 N RGE 36 E  
Then West approximately 2 ½ miles to North Reynolds Street in the city of Dubois.  
Then South to Main Street, then West on Main St to I-15 & then North to the point of beginning.

### Zone 2

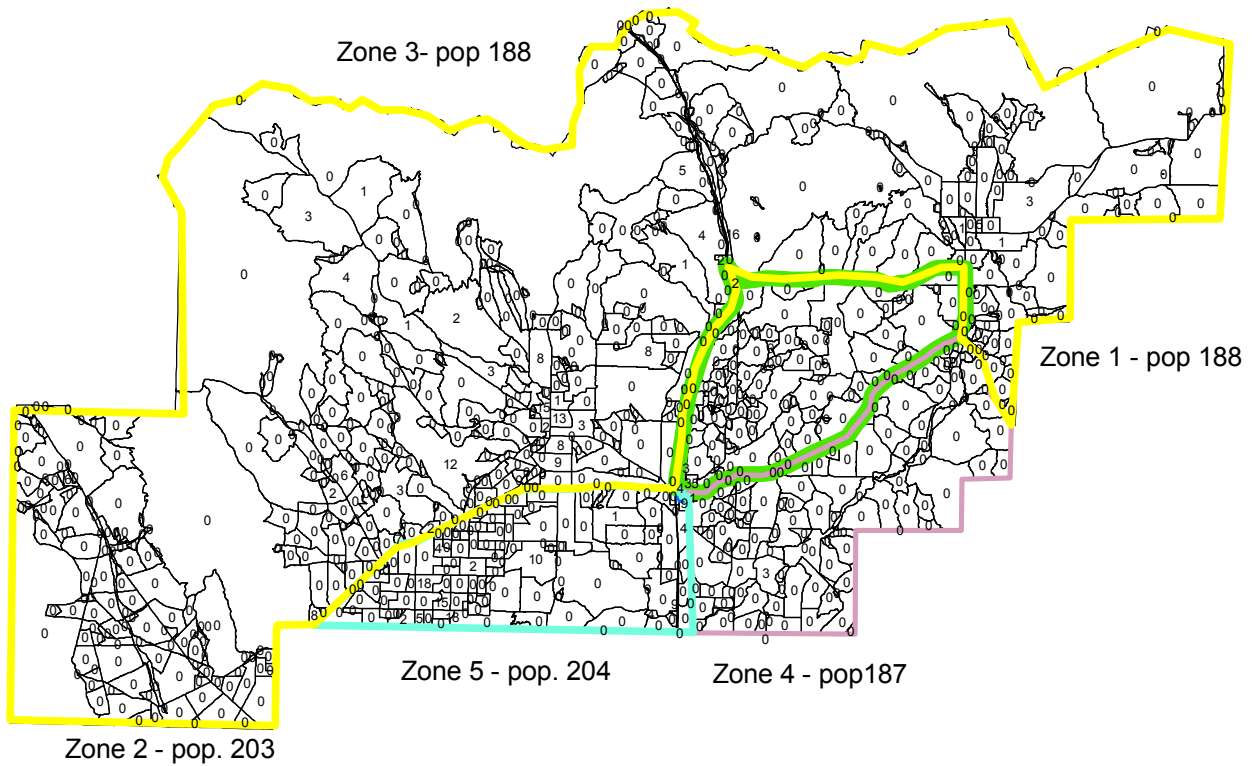
Beginning at the intersection of I-15 and Main Street Dubois heading East to S Idaho St,  
Then South to 2<sup>nd</sup> South Street, then East to Thomas Street, then South to 5<sup>th</sup> South Street, then  
East to South Reynolds Street, then South on Old Hwy 91 approximately 7½ miles to the  
Clark/Jefferson County line, then West on the Southern district boundary line to State Hwy 22,  
then East on Hwy 22 to the point of beginning.

### Zone 3

Beginning at the intersection of I-15 and HWY 22,  
Then West along State Hwy 22 to the Southern district boundary,  
Then West approximately 2 ¼ miles, then South approximately 6 miles,  
Then West approximately 15 miles to the Butte/Clark County boundary line,  
Then North approximately 18 miles, then East approximately 9 miles,  
Then North approximately 14 miles to the northern district boundary line,  
Then East along the northern district boundary line to the eastern boundary line  
Between Clark/Fremont Counties. Then South approximately 10 miles  
Then West approximately 9 miles, then South approximately 6 miles,  
Then West approximately 3 miles, then South approximately 6 miles to the  
Southern boundary line and the Red Road. Then North on the Red Road to the  
Junction of County A-2 Road. Then North to the intersection of County A-2 and  
Spencer Idmon Road. Then West on the Idmon Road to the intersection of Idmon and I-15.  
Then South on I-15 to the point of beginning.

# Clark County School Zone Boundaries

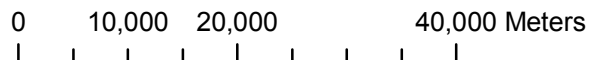
Proposed zone boundaries as per 2010 census



**Legend**

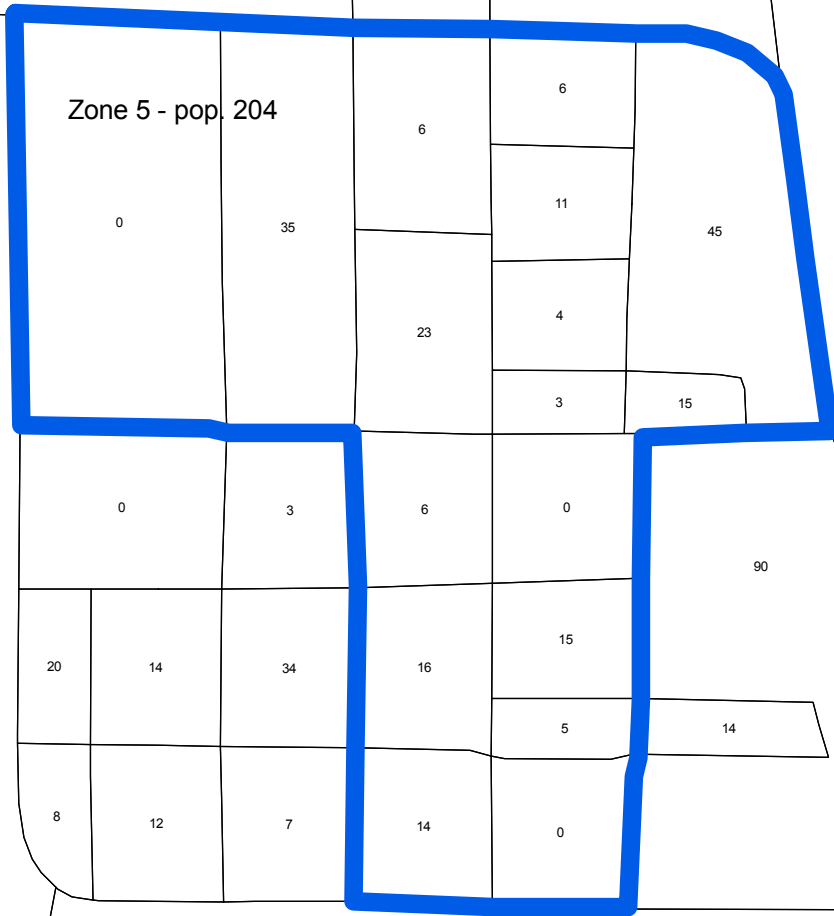
- Proposed\_Zone-3
- Proposed\_Zone-2
- Proposed\_Zone-4
- Proposed\_Zone-1
- Proposed\_Zone-5

Prepared by  
Richard Neves, Clark County High School  
Data provided by  
Steve Sweet, Quadrant Consulting  
July 7, 2011




# Clark County School Zone Boundaries

Proposed zone boundaries as per 2010 census



Prepared by  
Richard Neves, Clark County High School  
Data provided by  
Steve Sweet, Quadrant Consulting  
9 July 7, 2011

**Legend**

 Proposed\_Zone-5

